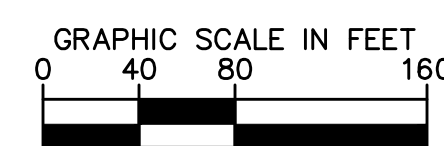
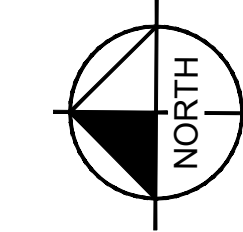
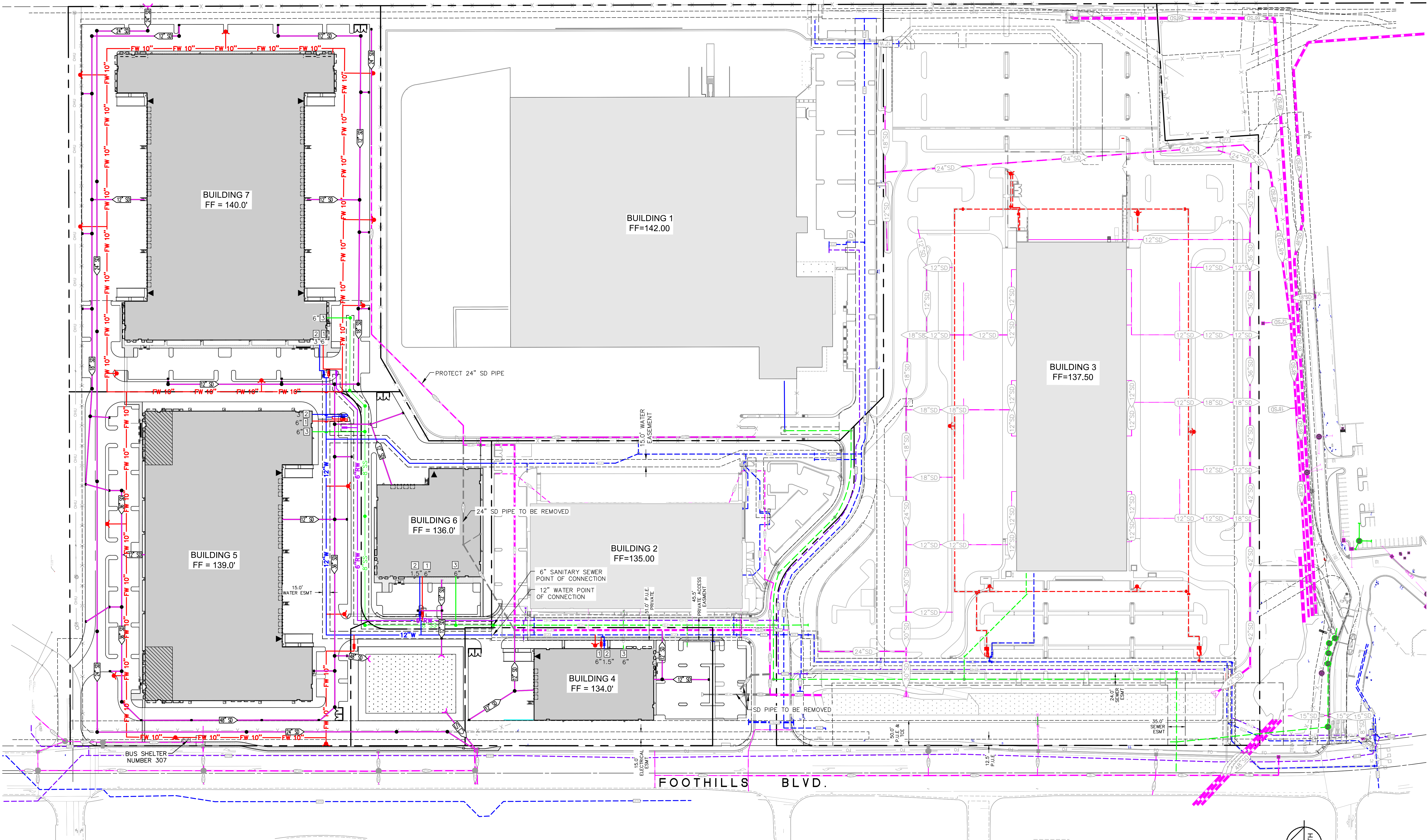


LEGEND

- 24" SD PROPOSED STORM DRAIN LINE
- - - 6" RW PROPOSED RECLAIMED WATER LINE
- 12" W PROPOSED WATER LINE
- 6" SS PROPOSED SANITARY SEWER LINE
- FW 10" PROPOSED FIRE WATER LINE
- - - EASEMENT LINE
- - - PROPERTY LINE
- - - EXISTING RECLAIMED WATER LINE
- - - EXISTING SANITARY SEWER LINE
- - - EXISTING WATER LINE
- - - EXISTING FIRE WATER LINE
- - - EXISTING STORM DRAIN TO BE REMOVED
- - - EXISTING STORM DRAIN

UTILITY NOTES

- 1 FIRE WATER POINT OF CONNECTION
- 2 DOMESTIC WATER POINT OF CONNECTION
- 3 SANITARY SEWER POINT OF CONNECTION



No.	REVISIONS	DATE

ROSEVILLE 80
LAND LLC.
8775 FOOTHILLS BLVD. #200
SACRAMENTO, CA 95826
TEL: 916-376-1202

Kimley-Horn
© 2019 KIMLEY-HORN AND ASSOCIATES, INC.
505 CAPITOL AVENUE, SUITE 300
SACRAMENTO, CA 95833
PHONE: 916-858-5900
WWW.KIMLEY-HORN.COM

LICENSED PROFESSIONAL	
NIA PROJECT	097913002
DATE	OCT. 2019
SCALE AS SHOWN	AS SHOWN
DESIGNED	AP
DRAWN	MRS
CHECKED	SS

PRELIMINARY UTILITY PLAN

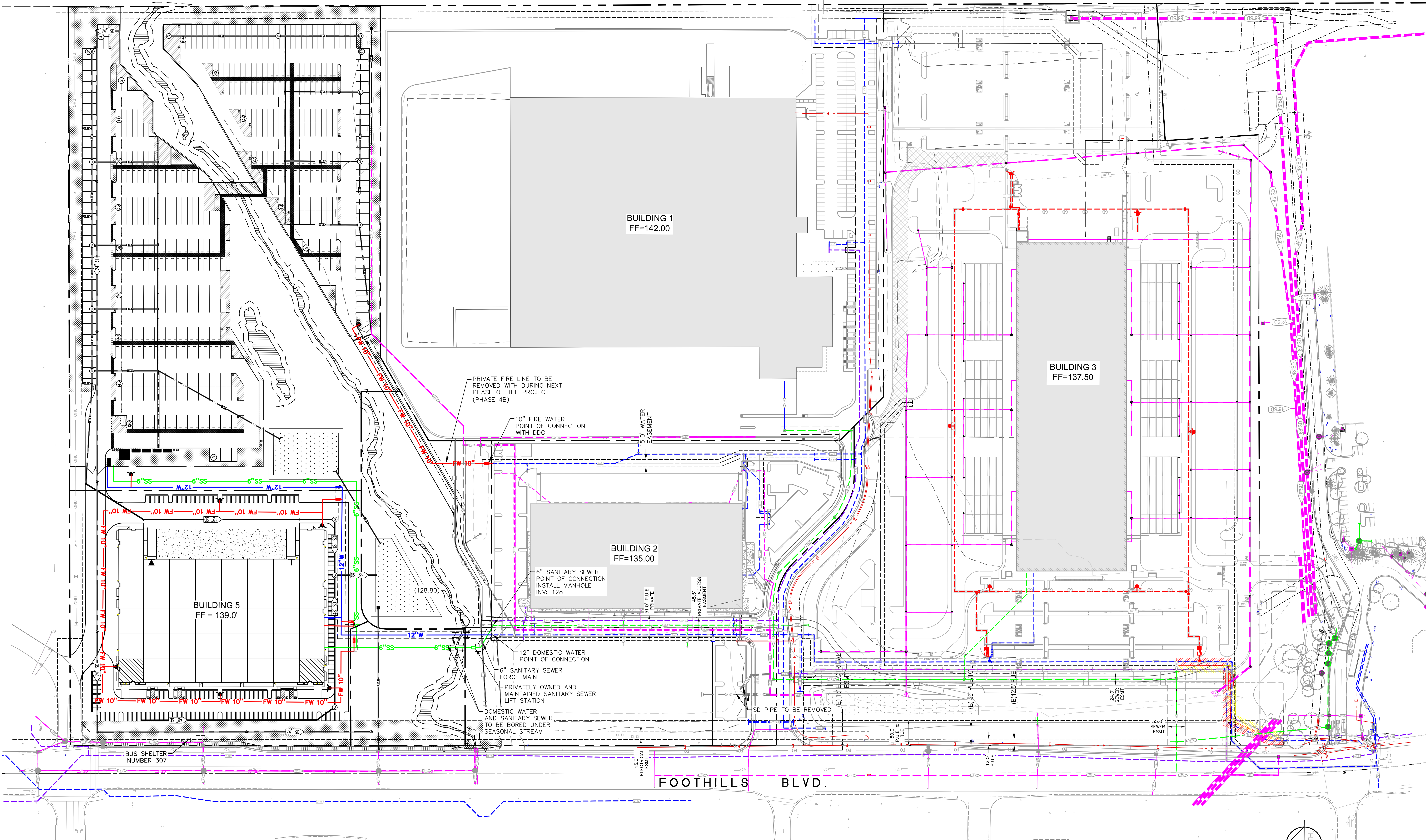
ROSEVILLE 80
NORTH LOT
7601 FOOTHILLS BLVD.
ROSEVILLE, CA 95747

SHEET NUMBER

Plotted By: Beltran, Annalis (Whittaker) Sheet Set: Utility Layout (C5-01) August 23, 2020 08:07:05pm K:\SAC_LIVE\097913002 Roseville 80 North Lot\08 CAD\Plan_Sheets\North Lot Preliminary\North Lot Preliminary Utilities.dwg
 This document, together with the concepts and designs presented herein, is an instrument of service, is intended only for the specific purpose and client for which it was prepared. Reuse or improper reliance on this document without written authorization and approval by Kimley-Horn and Associates, Inc. shall be without liability to Kimley-Horn and Associates, Inc.

LEGEND

- 24" SD PROPOSED STORM DRAIN LINE
- 6" RW PROPOSED RECLAIMED WATER LINE
- 12" W PROPOSED WATER LINE
- 6" SS PROPOSED SANITARY SEWER LINE
- FW 10" PROPOSED FIRE WATER LINE
- EASEMENT LINE
- PROPERTY LINE
- EXISTING RECLAIMED WATER LINE
- EXISTING SANITARY SEWER LINE
- EXISTING WATER LINE
- EXISTING FIRE WATER LINE
- EXISTING STORM DRAIN TO BE REMOVED
- EXISTING STORM DRAIN



Plotted By: Beltran, Amalia (Whittaker) Sheet Set: 191913002_005 Roseville 80 North Lot 08 CAD/CA/191913002_Van Parking Alternative Phase 4A and 4B Preliminary Utilities_Van Parking North Lot_Phase 4A.dwg
 This document, together with the concept and design presented herein, is intended only for the specific purpose and client for which it was prepared. Reuse or improper reliance on this document without written authorization and cooperation by Kimley-Horn and Associates, Inc. shall be without liability to Kimley-Horn and Associates, Inc.

No.	REVISIONS	DATE

ROSEVILLE 80 NORTH LOT
 7601 FOOTHILLS BLVD.
 ROSEVILLE, CA 95747

Kimley-Horn
 © 2019 KIMLEY-HORN AND ASSOCIATES, INC.
 505 CAPITAL MALL SUITE 300
 PHOENIX, AZ 85004
 WWW.KIMLEY-HORN.COM

ROSEVILLE 80 LAND LLC.
 8775 FOULSON BLVD #200
 SACRAMENTO, CA 95826
 TEL: 916-376-1202

LICENSED PROFESSIONAL

N/A PROJECT	DATE	SCALE AS SHOWN	DESIGNED	AP	DRAWN	MRS	CHECKED	SE
091913002	OCT. 2019	AS SHOWN	AP					

PRELIMINARY UTILITY PLAN PHASE 4A

ROSEVILLE 80 NORTH LOT
 7601 FOOTHILLS BLVD.
 ROSEVILLE, CA 95747

SHEET NUMBER

GRAPHIC SCALE IN FEET
 0 40 80 160

811 Know what's below. Call before you dig.

